



Innovation in every detail,
excellence in every project.

Some of
Our Projects

 **Alapros agri**
MILL



Stronger, together!

Alapros, a company specializing in grain processing technologies, offers integrated solutions with options for machine production and factory installation.

Alapros takes the design of grain milling machines and equipment to an advanced level with a perfectionist approach. Through integrated solutions that bring together design, diagrams, automation, and commissioning, it continues to manage milling values using the power of technology. With a strong brand identity that embraces reliability, speed, and a sense of responsibility, along with an expanded product range, Alapros aims to target the global market.

Located in the Corum Organized Industrial Zone, the production base conducts research and development activities focused on energy efficiency and is committed to producing facilities in line with Industry 4.0 standards.

Alapros, with its mission to promote improved food and food expenditure, invests in contemporary and future-oriented initiatives while providing services with a commitment to environmental responsibility.



and much more...

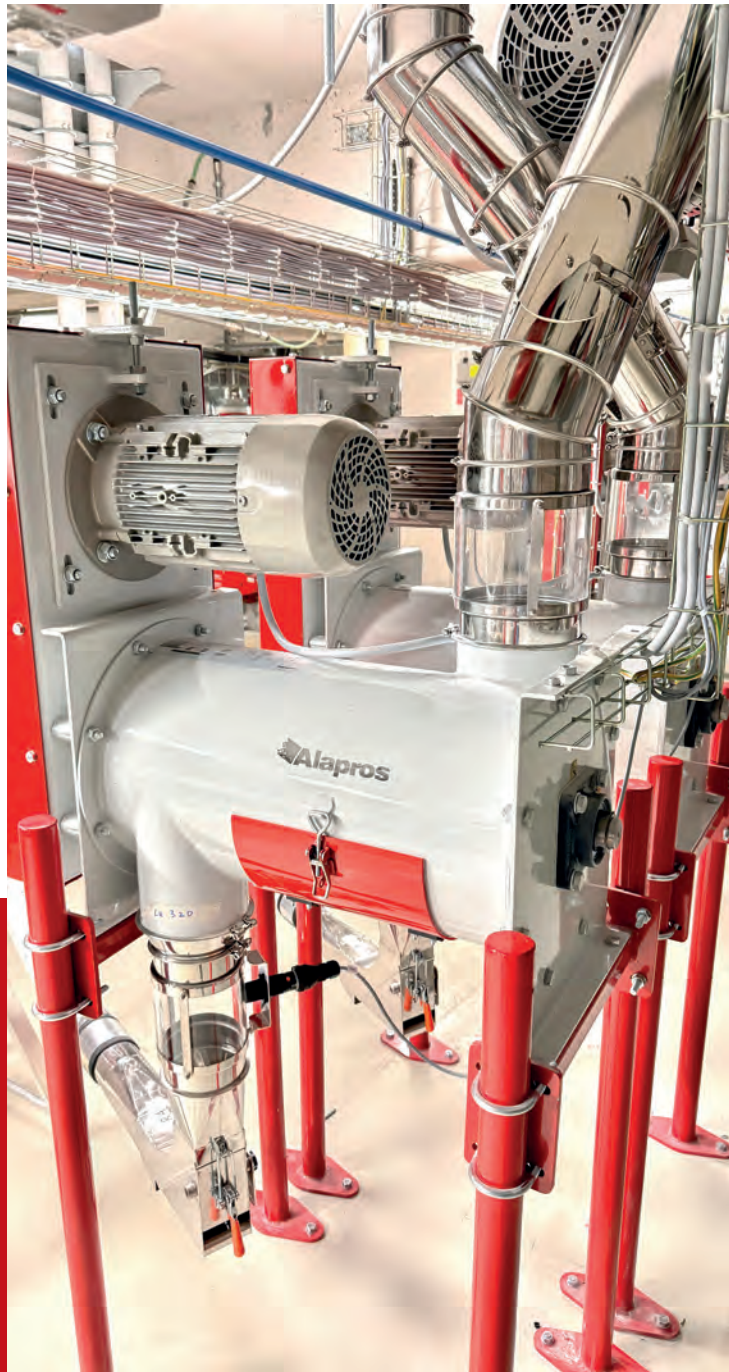
Casillo Group

300 Ton / 24h Wheat Flour Mill

The Casillo Group is a prominent Italian company specializing in the processing and distribution of durum wheat and soft wheat, making it one of the leading players in the global grain milling industry. Founded in 1958 by Vincenzo Casillo, the company has grown significantly over the decades, expanding its operations across various sectors related to agriculture and food production.

The Casillo Group operates 14 milling plants across Italy, ensuring a high production capacity and leveraging advanced technology in their processes. This extensive network allows them to produce a wide range of flours and semolinas tailored to meet diverse customer needs, from retail consumers to professional bakers and chefs.





A large industrial machine, likely a flour mill, with a red and white body and a large hopper. It is surrounded by numerous vertical stainless steel pipes in a factory setting. The machine has a red front panel with a black handle and a white hopper at the bottom. The brand name 'Casillo' is visible on the top, and 'Alapree' is on the red panel. The machine is connected to a large network of vertical stainless steel pipes. The floor is a light-colored, polished surface.

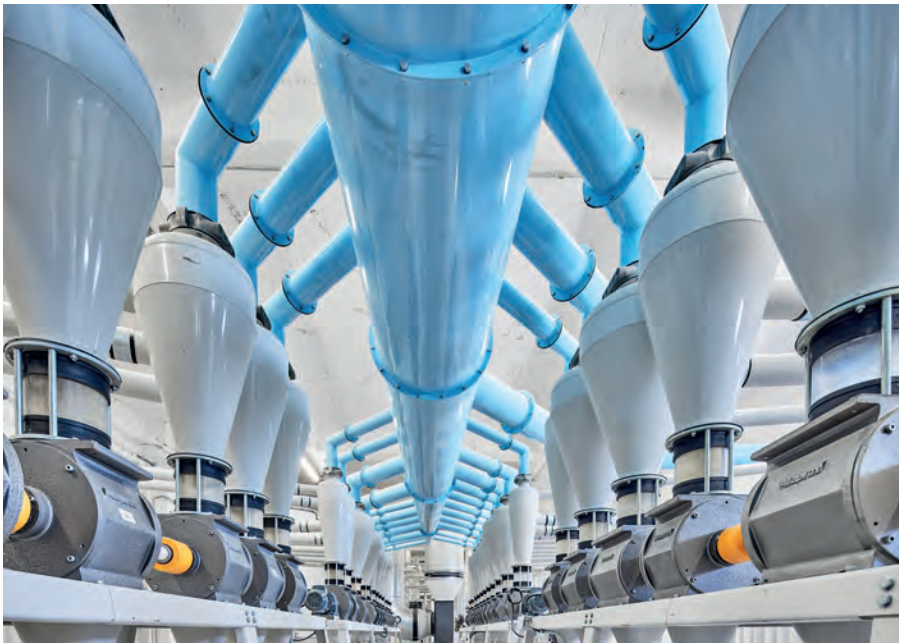
Ozbal Un

250 Ton / 24h Wheat Flour Mill

Ozbal Un, with its wheat flour facility located in Gaziantep, conducts uninterrupted production and stands among the powerful brands shaping the sector with a daily wheat processing capacity of 250 tons / 24 hours. With 15 specialized employees, it carries out production activities in compliance with food regulations and laws, ensuring high-quality output.









Soke Un

320 Ton / 24h Wheat Flour Mill

Soke Un, with its state of the art wheat flour facility located in Ankara, conducts uninterrupted production and stands among the powerful brands shaping the sector. With wheat processing capacity of 320 ton / 24hours, Soke Un ensures that it meets the highest standards of quality and efficiency.

The company operates in full compliance with food regulations and laws, guaranteeing that all products are produced under stringent safety and quality controls.





Mo'tabar

600 Ton / 24h Wheat Flour Mill

Mo'tabar Group is among the leading companies in Central Asia with its wheat flour mill production facility with an establishment capacity of 2000 tons / 24 hours and its strong production volume. Within the scope of its collaboration with Alapros in 2019, it added two wheat processing facilities (600 tons / 24 hours + 400 tons / 24 hours) to its portfolio, significantly increasing the company's wheat flour production capacity.







Mo'tabar

400 Ton / 24h Wheat Flour Mill

Mo'tabar Group is among the leading companies in Central Asia with its wheat flour mill production facility with an establishment capacity of 2000 tons / 24 hours and its strong production volume. Within the scope of its collaboration with Alapros in 2019, it added two wheat processing facilities (600 tons / 24 hours + 400 tons / 24 hours) to its portfolio, significantly increasing the company's wheat flour production capacity.







A large industrial machine, likely a meat grinder or slicer, with a stainless steel body and a large cylindrical tank, situated in a factory setting. The machine features a prominent stainless steel tank on the right side and a complex assembly of pipes and mechanical components on the left. The brand name "Alapros" is visible on the side of the machine. The background shows a typical industrial environment with concrete floors and structural beams.



Achamalia Group

150 Ton / 24h Semolina Mill

Achamalia Group, emphasizing the elevation of product quality and safety standards through advanced technology, provides its services with a 150 tons / 24 hours semolina mill production facility with its semolina mill production facility, it maximizes productivity with a daily output capacity of 150 tons / 24 hours.







A large industrial facility, likely a water treatment plant, featuring a complex network of blue pipes and grey machinery. In the foreground, a large grey machine with the 'Alapros' logo is visible. The background shows a long row of similar grey machines mounted on a metal frame, connected by a system of blue pipes. The ceiling is high with industrial lighting.

Macinazione Lendinara

200 Ton / 24h Wheat Flour Mill

Macinazione Lendinara, whose history dates back to 1937, is among the leading companies shaping Italy's food industry. It has a wheat processing facility with a capacity of 200 tons / 24 hours and a state-of-the-art wheat flour mill production facility established by Alapros. Production activities that continue 24 hours a day maximize operational efficiency.





Minocongo

300 Ton / 24h Maize Flour Mill

Minocongo offers high-capacity services in the production and supply of corn flour product groups, making a difference with a 300 tons / 24 hours corn processing production volume. The company, equipped with a corn processing facility with a capacity of 300 tons / 24 hours, places a strong focus on production efficiency.





Molino Denti

550 Ton / 24h Wheat Flour Mill

Molino Denti, emphasizing the elevation of product quality and safety standards through advanced technology, provides its services with a 550 tons / 24 hours wheat flour production facility. It supports its principle of producing high-quality flour with a daily production capacity of 550 tons / 24 hours.





Moagem Kikolo Luanda

600 Ton / 24h Wheat Flour Mill

400 Ton / 24h Maize Flour Mill

120 Ton / 24h Wheat Semolina Mill

Moagem Kikolo Luanda positions itself as 600 tons / 24 hour Wheat Flour Mill, 400 Ton / 24 hour Maize Flour Mill and 120 Ton / 24 hour Wheat Semolina Mill with the mission of meeting international consumption needs with a high quality product range. It operates a wheat flour mill production facility with a daily capacity of 1650 tons.





A photograph showing a long line of industrial machines, likely extruders or blowers, in a factory. The machines are grey with red accents and feature the 'Alapros' logo. A pressure gauge is visible on the side of the first machine. The background shows a complex network of pipes and structural elements.

Zine Invest Group

70 Ton / 24h Barley Semolina Mill

As a strong stakeholder in the food industry through barley semolina production activities, Zine Invest Group continues its work with a vision to support industrial development. With its barley semolina mill production facility, it maximizes productivity with a daily output capacity of 70 tons / 24 hours.





Senico

2 Ton / h Pasta Crushing Line

Senico, with its pasta crushing facility located in Senegal, conducts uninterrupted production and stands among the powerful brands shaping the sector with a daily processing capacity of 2 tons / 24 hours. With it carries out production activities in compliance with food regulations and laws, ensuring high-quality output.





www.alapros.com